



OXYGEN FREE COPPER

RoHS compliant

AS/ACIF S008

MULTI-CORE



75°C PVC INSULATION AND SHEATH - ACA N1155 (AUSTEL

- Applications:** Security Systems, Control and Communications Equipment, Access Control, Detection and Monitoring
- Conductor:** Oxygen Free Plain Copper Wire to AS1125
- Insulation:** RoHS Compliant 75°C PVC to AS3808
- Core Colours:** **4 Core: Red, Blue, White, Black**
6 Core: Red, Blue, White, Black, Green, Yellow
8 Core: Red, Blue, White, Black, Green, Yellow, Brown, Violet
- Sheath:** RoHS Compliant 75°C PVC to AS3808 and S008
- Sheath Colours:** **White, Grey, Brown - other colours available by request**
- Packs:** 100, 250, 300, 500, 1000 metres

CODE	NO. OF CORES	CONDUCTOR NO/DIA (mm)	NOMINAL AREA (mm ²)	AMP RATING	INSULATION THICKNESS (mm)	SHEATH THICKNESS (mm)	ELECTRICAL RESISTANCE @20°C (ohm/km)	NOMINAL O.D. (mm)	MASS (kg/100m)
SEC472*	4	7/0.2	0.2	1.4	0.3	0.5	89.5	3.9	2.2
SEC672*	6	7/0.2	0.2	1.4	0.3	0.5	89.5	4.6	3.4
SEC4142**	4	14/0.2	0.4	2.8	0.3	0.5	44.8	4.6	3.3
SEC6142**	6	14/0.2	0.4	2.8	0.3	0.5	44.8	5.5	5.2
SMC8702***	8	7/0.2	0.2	1.4	0.3	0.7	89.5	5.5	4.2

NOTE: (i) Extra Low Voltage - Not Suitable For Connection To Mains Power GPO
 * AUSTEL APPROVED A95/CA/0155
 ** AUSTEL APPROVED A95/CA/0153
 *** AUSTEL APPROVED A93/CA/0072

FIGURE 8 (PARALLEL WEBBED)



75°C PVC INSULATED - ACA N1155 (AUSTEL APPROVED)

- Applications:** Interconnection of Security and Allied Equipment
- Conductor:** Oxygen Free Plain Copper Wire to AS1125
- Insulation:** RoHS Compliant 75°C PVC to AS3808
- Colours:** **Red / Black, Brown / White, White / Grey, White / Black - other combinations available by request**
- Packs:** 100, 250, 500 metres

CODE	NO. OF CORES	CONDUCTOR NO/DIA (mm)	NOMINAL AREA (mm ²)	AMP RATING	INSULATION THICKNESS (mm)	ELECTRICAL RESISTANCE @20°C (ohm/km)	NOMINAL O.D. (mm)	MASS (kg/100m)
LEC2142*	2	14/0.2	0.40	2.50	0.4	44.8	1.6 x 3.5	1.4
LEC2242**	2	24/0.2	0.75	7.50	0.6	26.0	2.4 x 5.4	2.4
FFC22402***	2	24/0.2	0.75	7.50	0.8	26.0	2.8 x 6.0	2.8

NOTE: (i) LEC Cables ELV Not Suitable For Connection To Mains Power GPO
 * AUSTEL APPROVED A95/CA/0154
 ** AUSTEL APPROVED A95/CA/0158
 *** AUSTEL APPROVED A93/CA/0098 - 240V Insulation Thickness

TELEPHONE CABLE



75°C PVC INSULATION & SHEATH

AUSTEL APPROVALS: **CCL A93/CA/0055 (Quad)** **CCL A93/CA/0059 (3 Pair)**

- Applications:** Internal Telephone Cable
- Conductor:** Oxygen Free Plain Copper Wire to AS1125
- Insulation:** RoHS Compliant 75°C PVC to AS3808 and S008
- Core Colours:** **1 Quad: Red, White, Blue, Black**
3 Pair: White & Blue, Red & Black, Orange & Green
- Sheath:** RoHS Compliant 75°C PVC to AS3808 and S008
- Sheath Colours:** **White, Cream**
- Packs:** 100, 300 metres

CODE	PAIRS	CONDUCTOR NO/DIA (mm)	NOMINAL AREA (mm ²)	AMP RATING	INSULATION THICKNESS (mm)	SHEATH THICKNESS (mm)	ELECTRICAL RESISTANCE @20°C (ohm/km)	NOMINAL O.D. (mm)	MASS (kg/100m)
TIC4105	1 QUAD	1/0.5	0.2	1.2	0.16	0.7	94.1	3.9	2.2
TIC6105	3 PAIR	1/0.5	0.2	1.2	0.16	0.7	94.1	5.0	3.1

NOTE: (i) Extra Low Voltage - Not Suitable For Connection To Mains Power GPO

OXYGEN FREE COPPER

RoHS compliant

AS/ACIF S008



SCREENED MULTI-CORE RS232



ACA N1155 (AUSTEL APPROVED)

- Applications:** Security Control with Signal Integrity
Conductor: Oxygen Free Plain Copper Wire to AS1125
Insulation: RoHS Compliant 75°C PVC to AS3808 and S008
Core Colours: 4 Core - Red, Blue, Green, Yellow
 6 Core - Red, Blue, Green, Yellow, White, Black
 7 Core - Red, Blue, Green, Yellow, White, Black, Brown
Screen: Overall Aluminium / Polyester Laminate Tape Screen with a 7/0.2mm Tinned Copper Drain Wire
Sheath: RoHS Compliant 75°C PVC to AS3808
Sheath Colour: Grey
Packs: 100, 250, 300, 500 metres, bulk drum - depending on product type

CODE	NO. OF CORES	CONDUCTOR NO/DIA (mm)	NOMINAL AREA (mm ²)	AMP RATING	INSULATION THICKNESS (mm)	SHEATH THICKNESS (mm)	ELECTRICAL RESISTANCE @20°C (ohm/km)	NOMINAL O.D. (mm)	MASS (kg/100m)
DMC4702*	4	7/0.2	0.2	1.4	0.3	0.76	89.5	4.55	3.2
DMC6702*	6	7/0.2	0.2	1.4	0.3	0.76	89.5	5.40	4.2
DMC41402**	4	14/0.2	0.4	2.8	0.3	0.76	44.8	5.30	5.5
DMC71402**	7	14/0.2	0.4	2.8	0.3	0.76	44.8	6.20	6.8

NOTE: (i) Not Suitable For Connection To Mains Power GPO
 * AUSTEL APPROVED A93/CA/0123
 ** AUSTEL APPROVED A93/CA/0122

8723 EQUIVALENT

TWO - PAIR INDIVIDUAL SCREEN ACA N1155 (AUSTEL APPROVED)

- Applications:** Security Control with Signal Integrity
Conductor: Tinned Copper Wire to AS1125
Insulation: Data Grade Polypropylene
Core Colours: Pair 1: Black & Red
 Pair 2: Green & White
Screen: Individual Aluminium / Polyester Laminate Tape Screen on a common axis with a 7/0.2mm Tinned Copper Drain Wire
Sheath: RoHS Compliant 75°C PVC to AS3808
Sheath Colour: DQQ47025 - Grey / DQQ47067 - Black
Packs: 100, 250, 300, 500 metres



CODE	PAIRS	CONDUCTOR NO/DIA (mm)	NOMINAL AREA (mm ²)	INSULATION THICKNESS (mm)	SHEATH THICKNESS (mm)	CAPACITY MUTUAL (pF/m)	CAPACITY WIRE SCREEN (pF/m)	ELECTRICAL RESISTANCE @20°C (ohm/km)	NOMINAL O.D. (mm)	MASS (kg/100m)
DQQ47025*	2	7/0.25	0.34	0.26	0.4	115	200	56.0	4.4	3.1
DQQ47067	2 PAIRS + 1x7/0.67**	7/0.25	0.34	0.26	0.4	115	200	56.0	5.1x9.4	8.4
		7/0.67	2.5	0.8	0.5					

NOTE: (i) Not Suitable For Connection To Mains Power GPO
 * AUSTEL APPROVED A93/CA/0110
 ** Plain Copper Wire (PCW) Conductor Violet PVC Insulation

MULTI-PAIR OVERALL SCREEN RS485



- Applications:** Data Communication, Balanced Mode, Low Capacitance
Conductor: Tinned Copper Wire to AS1125
Insulation: Data Grade Polypropylene
Core Colours: Pair 1: White / Blue & Blue
 Pair 2: White / Orange & Orange
 Pair 3: White / Green & Green
Screen: Overall Aluminium / Polyester Laminate Tape Screen with a 7/0.2mm Tinned Copper Drain Wire
Sheath: RoHS Compliant 75°C PVC to AS3808 and S008
Sheath Colour: Grey
Packs: 100, 250, 300, 500 metres

CODE	PAIRS	CONDUCTOR NO/DIA (mm)	NOMINAL AREA (mm ²) per Core	AMP RATING	INSULATION THICKNESS (mm)	SHEATH THICKNESS (mm)	ELECTRICAL RESISTANCE @20°C (ohm/km)	CAPACITANCE		NOMINAL O.D. (mm)	MASS (kg/100m)
								WIRES OF A PAIR (pF/m)	BETWEEN 1 WIRE & ALL OTHERS (pF/m)		
DPF2702*	1	7/0.2	0.22	1.4	0.3	0.76	88.2	50.0	95	4.2	2.3
DPF4702*	2	7/0.2	0.22	1.4	0.3	0.76	88.2	50.0	95	5.6	3.3
DPF6702*	3	7/0.2	0.22	1.4	0.3	0.76	88.2	50.0	95	6.2	4.0

NOTE: (i) Extra Low Voltage - Not Suitable For Connection To Mains Power GPO
 * AUSTEL APPROVED A93/CA/0111



OXYGEN FREE COPPER

RoHS compliant

AS/ACIF S008

RS485 OVERALL SCREEN & BRAID ACA N1155 (AUSTEL APPROVED)



Applications: Data Communication, Low Capacitance
Conductor: Tinned Copper Wire to AS1125
Insulation: Data Grade Polyethylene
Core Colours: **Pair 1: Black & White**
Pair 2: Red & Green

Screen: Overall Aluminium / Polyester Laminate Tape Screen with a 7/0.2mm Tinned Copper Drain Wire
Braid: Tinned Copper Wire, 90% coverage
Sheath: RoHS Compliant 75°C PVC to AS3808 and S008
Sheath Colour: Grey
Packs: 100, 500 metres

CODE	PAIRS	CONDUCTOR NO/DIA (mm)	NOMINAL AREA (mm ²) per Core	INSULATION THICKNESS (mm)	SHEATH THICKNESS (mm)	ELECTRICAL RESISTANCE @20°C (ohm/km)	CAPACITANCE		IMPEDENCE OHMS	NOMINAL O.D. (mm)	MASS (kg/100m)
							WIRE TO WIRE (pF/m)	WIRE TO SCREEN (pF/m)			
DCK2702*	1	7/0.2	0.2	0.46	0.80	88.2	45	80	120	6.0	4.8
DCK4702	2	7/0.2	0.2	0.46	0.80	88.2	45	80	120	7.0	6.9

NOTE: (i) Extra Low Voltage - Not Suitable For Connection To Mains Power GPO
 *AUSTEL APPROVED A93/CA/0112

CO-AXIAL

75OHM - RG59 - RG6 QS - RG6 DS

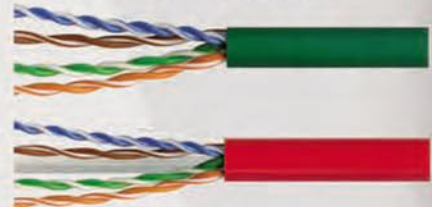
Applications: General Purpose Co-Ax, Interconnections of Electric Equipment & Instruments
Sheath Colour: Black
Packs: 100, 200, 305, 500 metres



CODE	RG TYPE	CONDUCTOR No/DIA (mm)	INSULATION		SCREEN		SHEATH		MASS kg/100m
			TYPE	mm	TYPE	%	TYPE	mm	
CCE11057	RG59	0.57 PCW	Solid PE	3.6	1 x PCW Braid	94%	PVC	6.15	6.0
CKC11035	RG6 QUAD SHIELD	1.02 CCS	Foam PE	4.57	1 x AL Foil	BONDED	PVC	7.62	10.0
					1 x AL Braid	60%			
					1 x AL Foil				
CKZ1102	RG6 DUAL SHIELD	1.02 PCW	Foam PE	4.57	1 x AL Foil		PVC	6.91	5.0
					1 x TCW Braid	60%			
CCE59224	RG59 + 2x24/2	0.57 PCW	SOLID	3.6	1 x PCW Braid	94%	PVC	10.2	14.0
		24/0.2 PCW	PVC	2.4					

CAT5E & CAT6 100OHM UTP CABLES - ACA N1155

Applications: High Speed Data / Communication Networks
Conductor: Plain Copper Wire
Insulation: High Speed Data Insulation
Pair Colours: **Pair 1: White / Blue & Blue**
Pair 2: White / Orange & Orange
Pair 3: White / Green & Green
Pair 4: White / Brown & Brown



Sheath: PVC
Sheath Colour: CAT5E: Blue, Green, Grey, Red, Violet, Yellow. CAT6: Blue, Red.
Pack: 305 metres

CODE	NO. OF PAIRS	CONDUCTOR NO/DIA (mm)	NOMINAL AREA (mm ²)	NOM/IMPED OHMS	ELECTRICAL RESISTANCE @20°C (ohm/km)	NOMINAL O.D. (mm)	MASS (kg/100m)
DPZ81051	4	0.51	0.20	100	93.8	5.3	3.0
DPA81051	4	0.55	0.24	100	75	6.0	4.0

NOTE: (i) Extra Low Voltage - Not Suitable For Connection To Mains Power GPO

Manufactured by



Distributed by:

Evolution Cables and Connectors
 Brisbane, Queensland
 tel: 07 3205 2660

www.evolutioncables.com.au